

# *R&E and STEP*

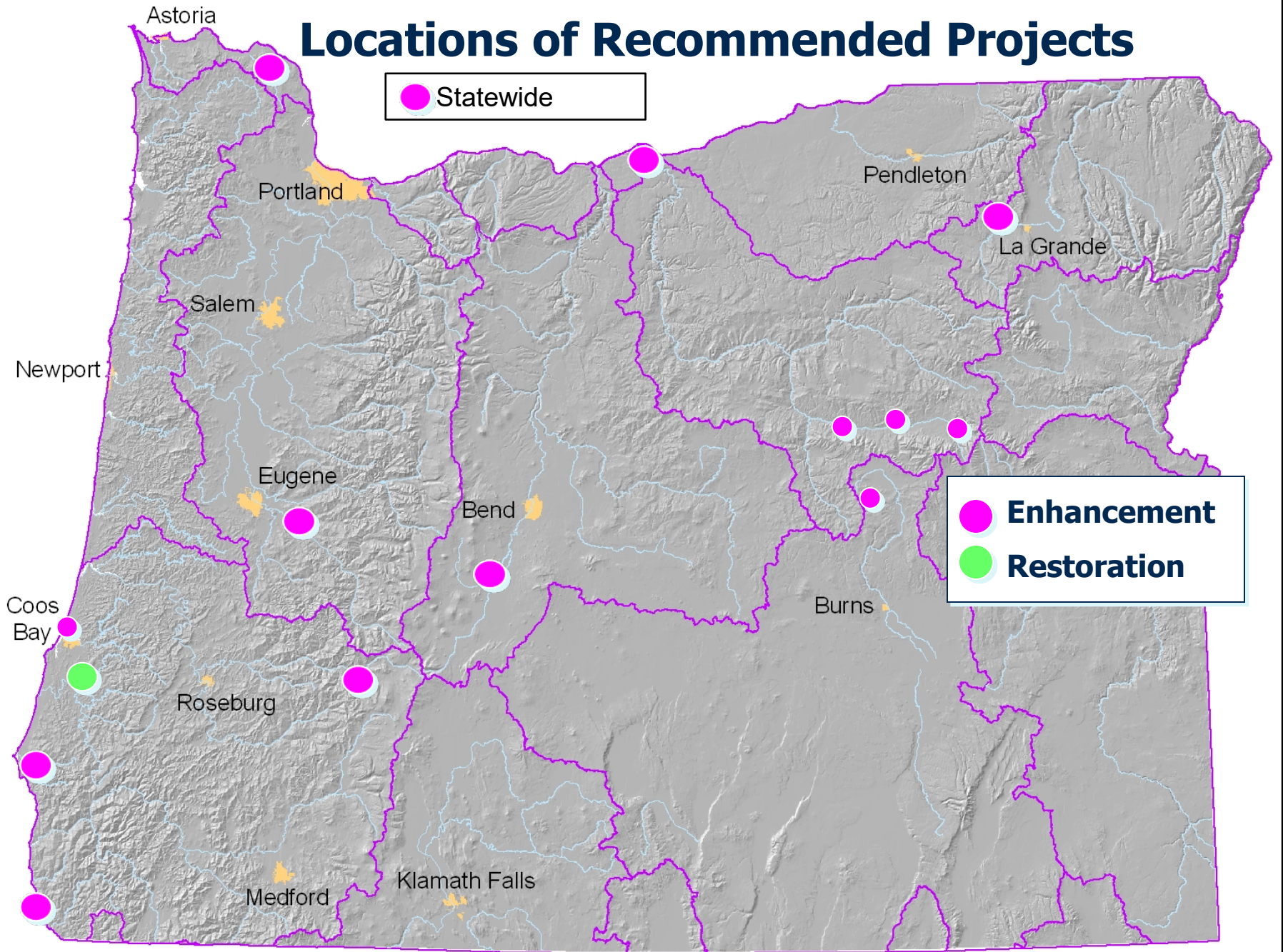
## *Issue 1: Project Approvals and Program Operations Funding*



*June 18, 2021  
Exhibit C*



# Locations of Recommended Projects



# Recommended Restoration Project

Project Number	Project Name	Activity Type	S/C	R&E Total	Vote
21-004	Maintenance & Upgrades - Noble Creek	Hatchery	S	\$11,915	7Y-0N
<b>TOTAL</b>				<b>\$11,915</b>	

# Recommended Enhancement Projects

Project Number	Project Name	Activity Type	S/C	R&E Total	Vote
21-002	Fishing Facilities Bundle 21/23	Angler Access	S	\$590,329	7Y-0N
21-003	Diamond Lake Monitoring/Invasive Species Removal	Monitoring/Research	S	\$81,946	4Y-3N
21-005	Morgan Lake Vault Toilet	Angler Access	S	\$33,250	7Y-0N
21-006	Old McKenzie Hatchery Community Fishing Pond	Angler Access	S	\$19,054	7Y-0N
21-007	Investigation of John Day Steelhead Overshoot	Monitoring/Research	S	\$79,151	6Y-1N
21-008	Iron Head Habitat Enhancement	Habitat Enhancements	S/C	\$40,000	7Y-0N
21-009	Warmwater Fish Mounts	Education/Outreach	S	\$6,403	7Y-0N
21-010	Carcus Creek Habitat Enhancement	Habitat Enhancements	S/C	\$43,500	7Y-0N
21-011	Bottomfish Fish Models	Education/Outreach	S	\$5,350	7Y-0N
21-012	Wyeth River Access Enhancement	Angler Access	S	\$25,166	4Y-3N
<b>TOTAL</b>				<b>\$924,149</b>	

## 21-23 Biennium

# R&E and STEP Program Operations

Item	Amount	Description
Program Administration	\$617,941	Program staff, meeting and travel expenses, grant management system, and publicity.
Construction Project Management	\$293,000	Planning and implementation of projects allowing them to be completed at reduced cost.
STEP	\$230,000	This provides funding for STEP mini-grants, education, and fish food.
Emergency Account	\$100,000	Funds for emergency work to be administered by program staff.
<b>TOTAL</b>	<b>\$1,240,941</b>	

# 21-004

## Maintenance & upgrades - Noble Creek



Repairs to concrete raceway



New roof



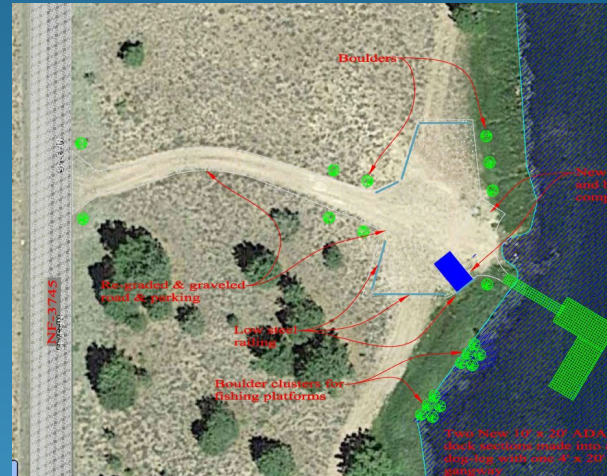
Electrical and Plumbing

# 21-002

## Fishing Facilities Bundle 21/23

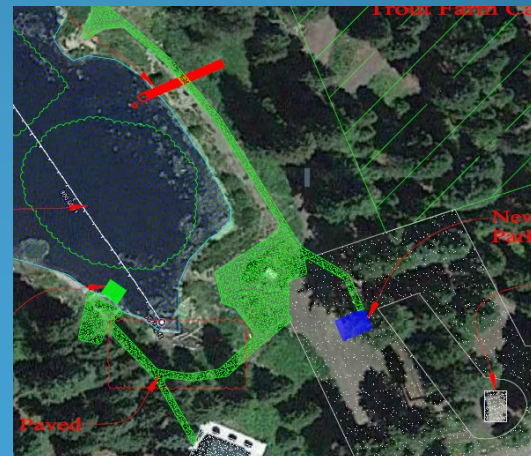
### Yellowjacket Lake

- ODFW land adjacent to USFS campground
- Adds ADA dock and gravel road at undeveloped site



### Trout Farm Pond

- At USFS developed campground
- Adds ADA dock, restores outlet and dredging of pond



# R&E Budget Status

## 2021-2023 Biennium

	Current Recommendation	Revenue*	Previously Approved Projects	Remaining if Cycle 1 Projects and Program Operations Funding are Approved
Restoration	\$395,885	\$2,011,977	\$0	
Enhancement	\$1,781,120	\$2,011,978	\$0	
<b>TOTAL</b>	<b>\$2,177,005</b>	<b>\$4,023,955</b>	<b>\$0</b>	<b>\$1,846,950</b>

\*19-21 ending balance will be added to this total once known. Limitation is projected to be \$5.6 million.

# Staff Recommendation:

Approve R&E Board recommendations.

